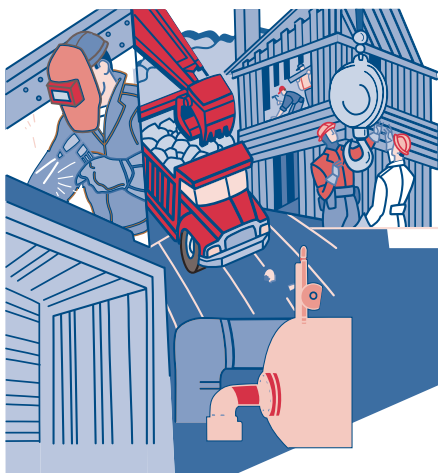


Nebraska On-Site Safety and Health Consultation Program



A Word from the Nebraska Commissioner of Labor

Today's highly sophisticated and technical workplace has its problems relating to the health and safety of Nebraska's labor force. Indeed, workplace injury and illness represents one of our nation's most serious public health problems.

Our mission is to assist employers, especially those in smaller businesses, in their goal of assuring a healthy and safe workplace for their employees. We do this by providing professional consultation, technical assistance, and educational programs, through our on-site health and safety consultation program.

We hope you will take advantage of these services, not only to enhance your own business, but also Nebraska as well, as a good place to live and work.

SAFETY AND HEALTH CONSULTATION PROGRAM

The Nebraska on-site consultation program assists employers in providing their employees with a safe and healthy workplace.



The Goal of the program is to help Nebraska employers identify and correct potential safety and health hazards before they become dangerous and expensive problems.

*THE PROGRAM IS A NO-COST
SERVICE FOR
NEBRASKA EMPLOYERS*

**The Total Service
can include:**

- A Walk-Through Safety and Health Survey
- Safety and Health Program Assessment
- Employer-Employee Training
- Ventilation System Evaluation
- Air Sampling and Analysis
- Evaluation of Electrical Systems and Equipment
- Review of Machine Guarding
- Noise Measurements
- Assistance with Personal Protective Equipment
- Comprehensive Written Reports
- Technical Assistance
- Exemption from Routine OSHA Inspections

NO-CHARGE SERVICE TO NEBRASKA BUSINESSES

How It Works

The Occupational Safety and Health Consultation Program is available to any business with one or more employees. We are unable to provide services to *municipal, county, state or federal organizations.*

Services are provided through
the
**Occupational Safety and Health
Administration**

and administered through
the
**Nebraska Workforce Development
Department of Labor
Safety and Labor Standards**

***There is no charge to any business
that requests services.***

PROVIDING KNOWLEDGEABLE AND HELPFUL ASSISTANCE

Program staff personnel are experienced professional safety and industrial hygiene consultants trained to identify safety and health hazards in your business or industry, supply recommendations to reduce or eliminate these hazards, and assess your safety and health program. Our purposes are to help your business meet current OSHA job safety and health regulations and develop an ongoing, effective safety and health program. We will provide to you confidential, comprehensive written reports containing our findings and recommendations. Additionally, we will provide follow-up services as necessary, which can include safety or health training at your place of business.

WITH VOLUNTARY EMPLOYER PARTICIPATION...

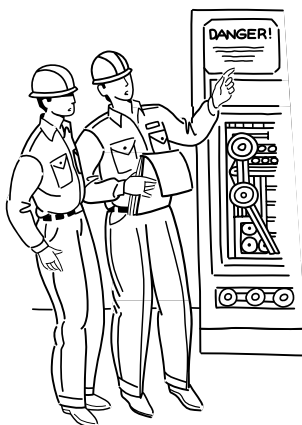
Program staff members provide consultation services at your request and consent. We will meet you at your place of business and with your guidance go through your facility. Potential safety and health hazards will be pointed out and explained. The consultation may include all or any part of the facility or worksite, as *requested by the employer.*



***You can also opt to pursue
an exemption from routine
OSHA inspections.***

OFFERING A NON-PENALTY APPROACH

Our consultants do not issue citations or penalties for violations of OSHA regulations. Our function is to identify hazards and violations of the regulations and provide recommendations for correction of serious hazards.



With Employer Commitment to Safety and Health.....

Employers must be committed to the elimination of serious hazards. Our consultants will help you in this process. Our objective is to assist Nebraska employers in providing a safe and healthy working environment and we ask that all employers actively join us in achieving this goal.

MAJOR STEPS IN THE CONSULTATION PROCESS

Step #1 Request

You must advise us of your interest. You start the process.

Step #2 On-Site Visit

A date and time is set for an on-site visit at your business or plant. During the visit an opening conference is held, a walk-through survey and a safety and health program assessment of the workplace are conducted. A closing conference is held to discuss the hazards found.

Step #3 Evaluation and Report

Following the visit, all collected information is evaluated and relevant research conducted. This may include laboratory analysis if air samples are taken. A report detailing all findings and recommendations, including ways to improve your safety and health program is prepared and forwarded to you.

MAJOR STEPS IN THE CONSULTATION PROCESS

Step #4 Correction of Serious Hazards

The report you receive will discuss potential hazards and a number of these may be considered to be of a serious nature. **Corrective action of serious or imminent hazards by the employer is a required part of this program.** The employer and consultant set and agree to the time goals for correction of the serious hazards.

Step #5 Follow-Up

Once serious hazards have been corrected, you will be asked to confirm and inform us of your corrective actions. In a few instances, a return visit may be necessary. In cases of assuring healthy air quality, for example: We will follow through with employers seeking an exemption from routine OSHA inspections.

Employers Obligations

- Appoint designated representative to opening and closing conferences
- Correct identified serious hazards within the agreed upon abatement period

ITS EASY TO OVERLOOK THE COSTS OF:

- Lost supervision time
- Repair or replacement of damaged equipment
- Administrative costs: claims, reports and other red tape
- Production schedule disruption, temporary personnel transfers to unfamiliar jobs, line rebalancing

The intangible costs of industrial accidents and disease, although difficult to measure, are just as real as insurance premium costs.



***Don't Let Avoidable Safety
and Health Hazards Cut
Into Your Profits***

NEBRASKA ON-SITE SAFETY AND HEALTH CONSULTATION PROGRAM IN SUMMARY

On-site Consultants Will:

- Help employers recognize hazards in the workplace
- Suggest general approaches or options for solving a safety or health problem
- Identify kinds of help available to the employer if further assistance is required
- Provide the employer with a written report summarizing findings

On-site Consultants Will Not:

- Issue citations or propose penalties for violations of OSHA standards
- Guarantee that any workplace will “pass” an OSHA inspection
- Prescribe specific engineering designs or identify specific firms to solve problems

How To Get Help

A consultation may be requested in person, by phone, or by mail. A request form is attached to this booklet for your convenience. If you would like to request a consultation or want more information on the program, write or call a consultant at one of the offices listed below.

Nebraska Workforce Development
Department of Labor
Safety & Labor Standards
Box 95024
Lincoln, NE 68509
(402) 471-4717

In North Platte call:
(308) 535-8165

Nebraska Workforce Development
Department of Labor—Safety
P.O. Box 95024
Lincoln, NE 68509
Telephone: (402) 471-4717

I would like to request a:

___ Safety Consultation

___ Health Consultation

___ Both a Safety and Health Consultation

Please contact me at your earliest convenience to discuss your free confidential consulting service.

NAME OF BUSINESS _____

NAME _____

NUMBER OF EMPLOYEES ON-SITE _____ NATIONWIDE _____

ADDRESS _____

CITY AND STATE _____ ZIP _____

PHONE NUMBER _____

AUTHORIZED SIGNATURE _____

Remove along perforation

PLACE
STAMP
HERE

**NEBRASKA WORKFORCE DEVELOPMENT
DEPARTMENT OF LABOR
SAFETY & LABOR STANDARDS
P.O. BOX 95024
LINCOLN, NE 68509**